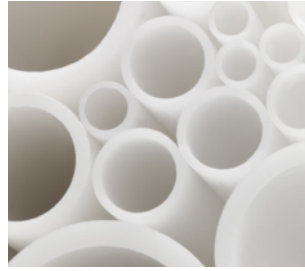


02 TUBOS POLIETILENO RETICULADO (PE-X) TUBES POLYÉTHYLÈNE RÉTICULÉ (PE-X) CROSSLINKED POLYETHYLENE PIPES (PE-X)

Tubo PE-Xb
Series 4.0 - 5.0
Color blanco

Tube PE-Xb
Séries 4.0 - 5.0
Couleur blanc

PE-Xb Pipe
 Series 4.0 - 5.0
 White colour



UNE EN ISO 15875

Ref.	Ø (e.)	M.	€/M
216208	● 12 (1,1) R.120M	3.240	0,55
216209	● 12 (1,1) R.200M	3.600	0,55
216127	● 16 (1,5) R.100M	2.700	0,98
216128	● 16 (1,5) R.200M	3.000	0,98
216002	● 16 (1,8) R.100M	2.700	1,10
216020	● 16 (1,8) R.200M	3.000	1,10
216021	● 16 (1,8) B.4M	200	1,10
216003	● 20 (1,9) R.100M	1.800	1,47
216022	● 20 (1,9) R.120M	2.160	1,47
216023	● 20 (1,9) R.200M	2.400	1,47
216024	● 20 (1,9) B.4M	100	1,47
216015	● 25 (2,3) R.50M	900	2,24
216025	● 25 (2,3) R.120M	1.440	2,24
216026	● 25 (2,3) B.4M	80	2,24
216008	● 32 (2,9) R.50M	800	3,61
216027	● 32 (2,9) B.4M	60	3,61
216009	● 40 (3,7) R.50M	300	6,11
216028	● 40 (3,7) B.4M	40	6,11
216010	● 50 (4,6) R.50M	50	9,53
216029	● 50 (4,6) B.4M	20	9,53
216054	● 63 (5,8) B.4M	4	15,13
216055	● 75 (6,8) B.4M	4	21,03
216056	● 90 (8,2) B.4M	4	30,22

Tubo PE-Xb
Serie 3.2 y medidas especiales
Color blanco

TUBE PE-Xb
Série 3.2 et dimensions spéciales
Couleur blanc

PE-Xb Pipe
 Series 3.2 and special measurements
 White colour



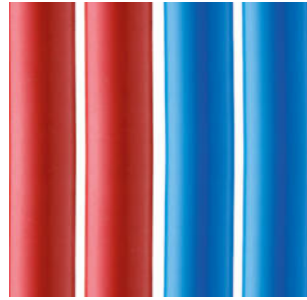
UNE EN ISO 15875

Ref.	Ø (e.)	M.	€/M
216001	● 12 (1,7) R.100M	2.700	0,83
216043	● 12 (2,0) R.100M	2.700	0,92
216044	● 16 (2,0) R.100M	2.700	1,29
216004	● 16 (2,2) R.100M	2.700	1,44
216030	● 16 (2,2) B.4M	200	1,44
216045	● 20 (2,0) R.100M	1.800	1,66
216005	● 20 (2,8) R.100M	1.800	2,15
216031	● 20 (2,8) B.4M	100	2,15
216006	● 25 (3,5) R.50M	900	3,33
216032	● 25 (3,5) B.4M	80	3,33
216007	● 32 (4,4) R.50M	800	5,34
216033	● 32 (4,4) B.4M	60	5,34

Tubo PE-Xb
Series 4.0 - 5.0
Color rojo y azul

Tube PE-Xb
Séries 4.0 - 5.0
Couleur rouge et bleu

PE-Xb Pipe
 Series 4.0 - 5.0
 Red and blue colour



UNE EN ISO 15875

Ref.	Ø (e.)	M.	€ / M
216046	● 12 (1,1) R.120M	3.240	0,61
216042	● 12 (1,1) R.200M	3.600	0,61
216195	● 12 (1,1) R.240M	4.320	0,61
216080	● 12 (1,1) R.120M	3.240	0,61
216057	● 12 (1,1) R.200M	3.600	0,61
216196	● 12 (1,1) R.240M	4.320	0,61
216073	● 16 (1,5) R.100M	2.700	1,04
216036	● 16 (1,5) R.200M	3.000	1,04
216187	● 16 (1,5) R.100M	2.700	1,04
216066	● 16 (1,5) R.200M	3.000	1,04
216052	● 16 (1,8) R.100M	2.700	1,21
216105	● 16 (1,8) R.200M	3.000	1,21
216061	● 16 (1,8) B.4M	200	1,21
216106	● 16 (1,8) R.100M	2.700	1,21
216107	● 16 (1,8) R.200M	3.000	1,21
216100	● 16 (1,8) B.4M	200	1,21
216065	● 20 (1,9) R.100M	1.800	1,62
216038	● 20 (1,9) R.120M	2.160	1,62
216039	● 20 (1,9) R.200M	2.400	1,62
216062	● 20 (1,9) B.4M	100	1,62
216108	● 20 (1,9) R.100M	1.800	1,62
216058	● 20 (1,9) R.120M	2.160	1,62
216070	● 20 (1,9) R.200M	2.400	1,62
216101	● 20 (1,9) B.4M	100	1,62
216040	● 25 (2,3) R.50M	900	2,47
216041	● 25 (2,3) R.120M	1.440	2,47
216063	● 25 (2,3) B.4M	80	2,47
216077	● 25 (2,3) R.50M	900	2,47
216067	● 25 (2,3) R.120M	1.440	2,47
216102	● 25 (2,3) B.4M	80	2,47
216075	● 32 (2,9) R.50M	800	3,98
216064	● 32 (2,9) B.4M	60	3,98
216109	● 32 (2,9) R.50M	800	3,98
216110	● 32 (2,9) B.4M	60	3,98

Tubo PE-Xb / PE-RT
Barrera Antioxígeno
EVOH
Color blanco

Tube PE-Xb / PE-RT
Barrière Anti-Oxygène
EVOH
Couleur blanc

PE-Xb / PE-RT pipe
 Anti-Oxygen Barrier
 EVOH
 White colour



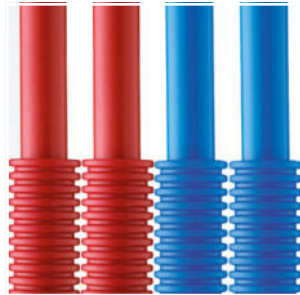
UNE EN ISO 15875
(PE-Xb)

UNE EN ISO 22391
(PE-RT)

Tubo PE-Xb envainado
Corrugado transparente
Color rojo y azul

Tube PE-Xb prégainé
Annelé transparent
Couleur rouge et bleu

Preinsulated PE-Xb pipe
 Corrugated transparent
 Red and blue colour



UNE EN ISO 15875

PE-Xb

Ref.	Ø (e.)	M.	€/M
232070	● 12 (1,1) R.120M	3.240	0,71
232071	● 12 (1,1) R.200M	3.600	0,71
232044	● 16 (1,5) R.120M	2.160	1,29
232045	● 16 (1,5) R.200M	3.000	1,29
232046	● 16 (1,5) R.400M	400	1,29
232047	● 16 (1,5) R.500M	500	1,29
232002	● 16 (1,8) R.120M	2.160	1,37
232003	● 16 (1,8) R.200M	3.000	1,37
232014	● 16 (1,8) R.400M	400	1,37
232009	● 16 (1,8) R.500M	500	1,37
232004	● 20 (1,9) R.120M	2.160	1,88
232005	● 20 (1,9) R.200M	2.400	1,88

PE-RT

Ref.	Ø (e.)	M.	€/M
248006	● 16 (1,8) R.200M	3.000	1,28
248007	● 16 (1,8) R.500M	500	1,28
248009	● 20 (1,9) R.120M	2.160	1,76
248010	● 20 (1,9) R.200M	2.400	1,76

Ref.	Ø (e.)	M.	€/M
241001	● 12 (1,1) R.100M	100	1,07
241002	● 12 (1,1) R.100M	100	1,07
241009	● 12 (1,1) R.50M	50	2,57
241003	● 16 (1,5) R.100M	100	1,83
241004	● 16 (1,5) R.100M	100	1,83
241040	● 16 (1,5) R.50M	50	4,40
241011	● 16 (1,8) R.100M	100	2,11
241012	● 16 (1,8) R.100M	100	2,11
241010	● 16 (1,8) R.50M	50	5,08
241005	● 20 (1,9) R.60M	60	2,77
241006	● 20 (1,9) R.60M	60	2,77
241007	● 25 (2,3) R.60M	60	4,06
241008	● 25 (2,3) R.60M	60	4,06